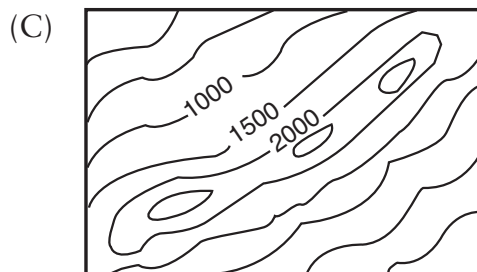
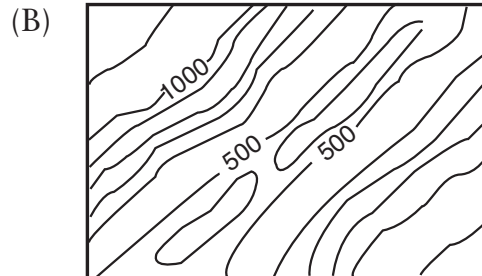
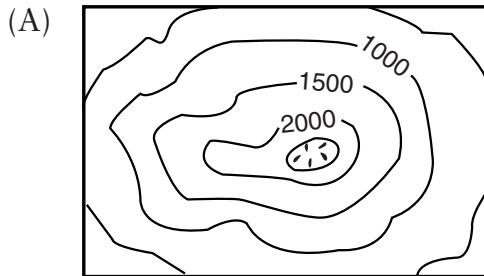


Volcanoes and Your Community: End-of-Chapter Assessment

1. Which of the following best describes the global distribution of volcanoes?
 - a) Most volcanoes occur in linear patterns.
 - b) Most volcanoes occur at the Earth's poles.
 - c) Most volcanoes occur on land.
 - d) Most volcanoes occur in coastal California.
2. At which of the following locations would you LEAST expect volcanic activity?
 - a) Iceland.
 - b) Washington and Oregon.
 - c) Central Ohio.
 - d) The middle of the Atlantic Ocean.
3. Which of the following topographic maps represents a classic volcanic cone?
 - a) A
 - b) B
 - c) C



4. Which of the following is most likely to erupt explosively?
 - a) Magma of very low silica content (40%).
 - b) Magma of low silica content (50%).
 - c) Magma of medium silica content (60%).
 - d) Magma of high silica content (70%).

5. Which of the following results from volcanic eruptions onto mountainsides covered with snow and ice?
 - a) Cinder cones formed of pyroclastic debris.
 - b) Damaging mudflows of wet volcanic debris called lahars.
 - c) Lava domes of thick, viscous magma.
 - d) Giant calderas that can be many kilometers in diameter.

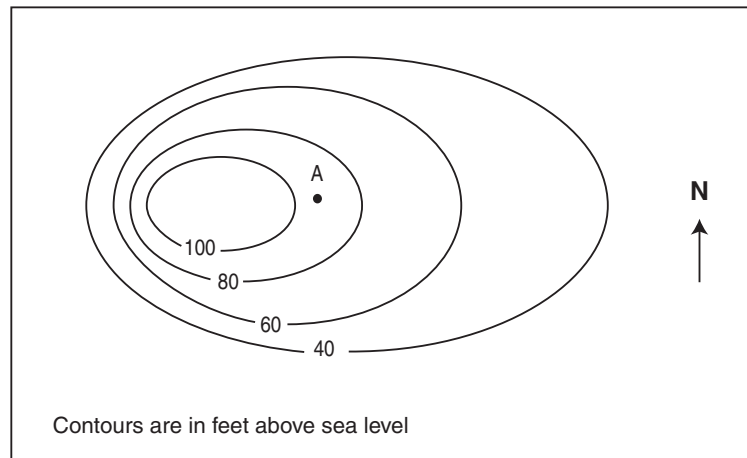
6. Which of the following volcanic hazards is most likely to affect communities several hundred kilometers from the volcano site?
 - a) Mudflow.
 - b) Ash fall.
 - c) Pyroclastic flow.
 - d) Lava flow.

7. On a walk in your community, you find rock exposures of fine-grained basalt and pumice. What can you infer about volcanic activity in your community from the presence of these rocks?
 - a) Volcanic activity will occur in your community in the near future.
 - b) There has once been volcanic activity in your community.
 - c) Basalt and pumice once erupted at the same time in your community.
 - d) Igneous rocks formed underground in your community and are now exposed due to erosion.

8. Which of the following is NOT a role that volcanoes play in the water cycle and atmosphere?
 - a) Volcanoes emit water vapor into the atmosphere.
 - b) Groundwater circulates within volcanoes and near other hot rock bodies and becomes heated.
 - c) Mudflows associated with volcanoes (lahars) contain water brought from the interior of the Earth (mantle).
 - d) All of the oxygen in the air we breathe originally came from a volcano.

9. Mercator map projections, such as the map *This Dynamic Planet*:
 - a) Distort regions more and more as you move toward the poles.
 - b) Accurately represent the size and shape of the United States.
 - c) Are most distorted near the Equator.
 - d) Cover the entire Earth.

Questions 10 through 12 refer to the map below.



10. What is the contour interval?
 - a) 20 feet.
 - b) 40 feet.
 - c) 60 feet.
 - d) 80 feet.

11. If lava erupted at point A, in which direction would it flow?
 - a) North
 - b) South
 - c) East
 - d) West

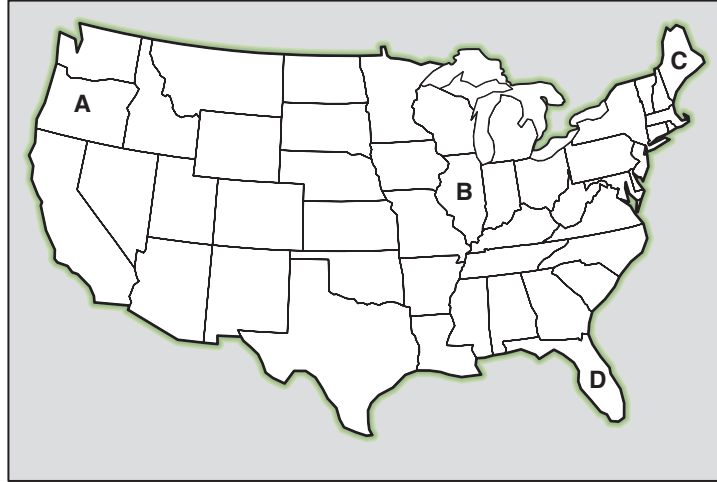
12. Which side of this feature has the steepest slope?
 - a) North
 - b) South
 - c) East
 - d) West

13. Which of the following would increase the speed of flow of magma?
 - a) An increase in viscosity.
 - b) An increase in silica content.
 - c) A decrease in slope.
 - d) An increase in temperature.

14. If magma from a volcanic eruption were low in silica and low in gas content, which hazard would you expect?
 - a) Tephra fallout.
 - b) Ash fallout.
 - c) Lava flow.
 - d) Pyroclastic flow.

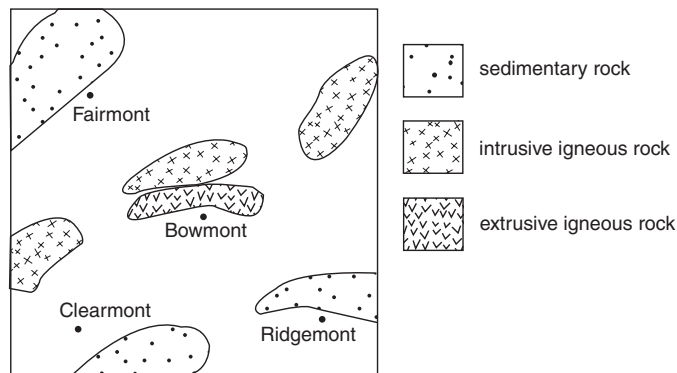
15. Which of the following would be the best predictor of local wind direction?
- Ash fallout.
 - Low Volcanic Explosivity Index (VEI).
 - High Volcanic Explosivity Index (VEI).
 - Lahar path.

Question 16 refers to the map below.



16. What is the most likely location of a new volcano?
- A
 - B
 - C
 - D

Question 17 refers to the map below.



17. Using the map data, infer which town is located closest to a volcanic area.
- Fairmont.
 - Clearmont.
 - Ridgemont.
 - Bowmont.

18. Which of the following describes an extrusive igneous rock?
- a) Slowly cooled rock with coarse grains.
 - b) Quickly cooled rock with coarse grains.
 - c) Slowly cooled rock with fine grains.
 - d) Quickly cooled rock with fine grains.
19. When magma from beneath the Earth's surface erupts as a volcano, which of the following happens?
- a) The amount of gas dissolved in the magma increases.
 - b) The pressure on the magma increases.
 - c) The amount of gas dissolved in the magma decreases.
 - d) The amount of water vapor in the air decreases.
20. Which of the following statements is the most accurate?
- a) Volcanic eruptions lead to global cooling.
 - b) Volcanic eruptions only lead to global warming.
 - c) Some volcanic products affect global cooling; others affect global warming.
 - d) Volcanic eruptions always lead to increased rainfall.
21. Which of the following changes are most likely to occur prior to an eruption?
- a) An increase in the number of earthquakes and decrease in the amount of steam escaping.
 - b) An increase in the number of earthquakes and increase in the elevation of the land.
 - c) A decrease in the number of earthquakes and increase in the amount of steam escaping.
 - d) A decrease in the number of earthquakes and decrease in the elevation of the land.
22. Volcano monitoring can:
- a) Divert lava flows during a volcanic eruption.
 - b) Slow a volcanic eruption.
 - c) Reduce earthquakes in a volcanic eruption.
 - d) Save lives in a volcanic eruption.