

Organism: BERRIES

Eats: (Absorbs) Light Energy

Eaten by: RACCOONS



Organism: VEGETATION

Eats: (Absorbs) Light Energy

Eaten by: INSECTS



Organism: SEEDS

Eats: (Absorbs) Light Energy

Eaten by: MICE



Organism: INSECTS

Eats: VEGETATION

Eaten by: GROUSE, TOWNSEND'S MOLE, RING-NECKED PHEASANTS, WOODPECKERS



Organism: OWLS

**Eats: MICE, TOWNSEND'S
MOLE**

Eaten by:



Organism: RACCOONS

Eats: BERRIES

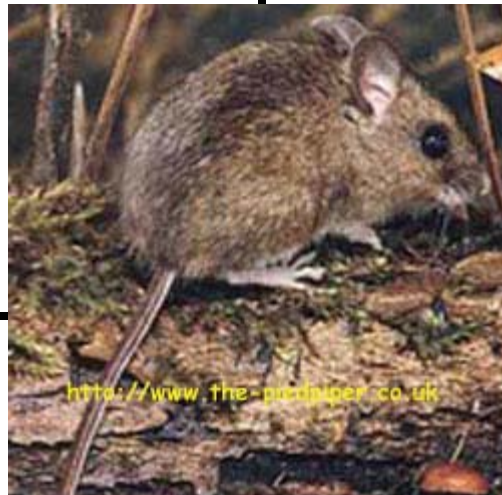
Eaten by:



Organism: MICE

Eats: SEEDS

**Eaten by:
OWLS,
EAGLES,
HAWKS**



Organism: EAGLE

Eats: MICE, TOWNSEND'S MOLE

Eaten by:



Organism: HAWKS

**Eats: MICE,
TOWNSEND'S MOLE**

Eaten by:



Organism: GROUSE

Eats: INSECTS

Eaten by:



Organism: TOWNSEND'S MOLE

Eats: INSECTS

Eaten by: OWLS, EAGLES, HAWKS



Organism: WOODPECKER

Eats: INSECTS

Eaten by:

